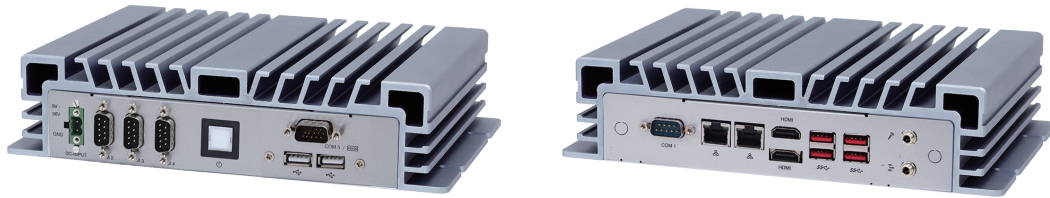


# BPC-3080

**Arestech**

Fanless Compact Embedded Box PC with 8th Generation Whisky Lake-U  
Quad-core Intel® Core™ i5 Processor



## Key Features

- 8th Gen. Intel® Core™ i5-8265U up to 3.90 GHz
- Supports RAID 0 / 1
- 2x HDMI 1.4 up to 4K Resolution
- Fast Connectivity with 4x USB 3.1 Gen. 2
- -20 ~ 60° C Operating Temperature

## Applications

- Embedded Digital Signage Control Systems
- Factory Automation
- Image Processing
- Transportation Management
- Machine Automation

## → Ordering Information

Part No.	Description
BPC-3080-1A1	Intel® 8th Gen Core™ i5-8265U, 4x USB3.1 Gen 2, 2x USB2.0, 3x RS232, 1x RS-232/422/485, 2x GbE, 2x HDMI, 8-bit GPIO, RAID 0/1, Line Out, Mic In, DC 9~36 V, Phoenix Connector

## → Packing List

Description
1 x BPC-3080
1 x Power Adaptor
1 x Power Cord

## → Optional Items

Part No.	Description
AWD-4G003	4G(LTE) EG25-G + 2 Antennas, Full Size (for Global)
AWD-WF001	Wi-Fi 802.11 b/g/n (1T1R) + 1 Antenna, Half Size
AWD-WF003	Wi-Fi 802.11 a/b/g/n/ac/BT4.0 (2T2R) + 2 Antennas (Dual Band), Half Size
AWD-WF004	Wi-Fi 802.11 b/g/n + BT4.0 (1T1R) + 2 Antennas (Single Band), M.2 2230 Type
AWD-WF005	Wi-Fi 802.11 a/b/g/n/ac/BT4.0 (2T2R) + 2 Antennas (Dual Band), M.2 2230 Type

## → Specifications

	Model	BPC-3080-1A1
Processor System	CPU	Intel® 8th Gen Core™ i5-8265U
	Frequency	Quad Core, up to 3.9 GHz
	System Chipset	N/A
	Cache	6 GB
	BIOS	UEFI
Memory	Technology	Dual Channel DDR4 2400 MHz SDRAM
	Max. Capacity	32 GB
	Type	2x 260-pin SO-DIMM
Display	Graphics Engine	Intel® UHD Graphics 620
	HDMI	2x HDMI 1.4, up to 4096 x 2304 @ 24Hz
	DP	N/A
	VGA	N/A
	DVI	N/A
Front I/O Interface	USB	2x USB 2.0
	Serial Port	3x RS 232
	Ethernet	N/A
	Audio	N/A
	GPIO / DIO	8-bit GPIO
	Antenna Hole	2
	Others	N/A
Rear I/O Interface	USB	4x USB 3.1 Gen 2
	Serial Port	1x RS232/422/485
	Ethernet	2x GbE (LAN 1: Intel® i219V, LAN 2: Intel® i211AT)
	Audio	Line Out, Mic In (Realtek ALC662)
	GPIO / DIO	N/A
	Antenna Hole	2
	Others	N/A
Storage	2.5" HDD / SSD	1x SATA III (6.0 Gb/s)
	M.2	1x M.2 M Key 2280 (PCIe x4, SATA 6Gb/s)
	mSATA	N/A
	RAID	RAID 0/1
Expansion	Mini PCIe	1x Full Size
	M.2	1x M.2 E Key 2230 (Wi-Fi, BT)
	PCI / PCIe	N/A
	SIM Holder	1
Power	Power Mode	AT / ATX
	Power Supply Voltage	9-36V DC Input
	Power Connector Type	Phoenix Connector
	Power Consumption (Typical)	1.20A @ 12V (14.4W)
Mounting	Type	Wall Mount
Environment	Operating Temperature	-20~60° C (-4~140° F) w/ Extend Temp. RAM & Extend Temp. 2.5" SSD (Humidity: 60° C @ 80% RH Non-condensing)
	Storage Temperature	-40~85° C (-40~185° F)
	Humidity	5~95% @ 40° C, Non-condensing
	Vibration	1 Grms, IEC 60068-2-64, Random, 5~500 Hz, 1 Oct/min., 1hr/axis, x, y, z 3 axes
	Shock	20 G, IEC 60068-2-27, Half Sine, 11 ms Duration
General	Certification	N/A
	Thermal Dissipation	Fanless
	Material	Extruded Aluminum
	Dimensions (W x H x D)	238 x 55 x 155 mm (9.37" x 2.16" x 6.1")
	Net Weight	1.97 kg (4.34 lb)
	Operating System	Windows 10 (IoT/Professional), Linux

# BPC-3080

## → Dimensions

